

## Opportunities Abound

Take to the trail for a day or even a few hours, it will amaze you. Popular activities include walking, hiking, cycling, and horseback riding during fair weather seasons, and cross country skiing and snowmobiling during the winter. Sections of the trail are enjoyed by hobby enthusiasts, such as nature lovers, birdwatchers, and photographers.

Wonderful vistas and panoramas, many within easy walking distances from key access points along the trail, provide timeless enjoyment. Portions of the trail offer accessibility and are suitable for persons with limited physical ability.



## Love Your Trail Kawartha Trans Canada Trail

### Thank You

The Kawartha Trans Canada Trail promises to serve our community and welcome visitors for years to come. Please use the trail and support it. Mail in your donation or make a contribution online at [loveyourtrail.ca](http://loveyourtrail.ca).



**Kawartha**  
Trans Canada Trail

**Yours Year Round**



## Welcome to the Kawartha Trans Canada Trail

Come and enjoy your section of Canada's national trail. The Kawartha Trans Canada Trail offers a natural recreational corridor for people of all ages and abilities. This historic railway bed now spans into 53.8 km of trail traversing east to west across Kawartha Lakes.

You will encounter woodlands, farmlands, wetlands, and communities. For the most part, the trail is relatively flat, with modest changes in elevation throughout its entire length. Trail users will find facilities such as benches, bicycle racks, and picnic shelters along the way. Discover the trail's many attributes and experience it for yourself.





## Educational Opportunities

The trail provides educational opportunities for several public and secondary schools and Fleming College, which are in close proximity to the trail. Students and other trail users can explore geocaches, listen to an interpretive podcast or appreciate the trail's varied flora and fauna.



Kawartha Trans Canada Trail Association  
c/o Fleming College - Frost Campus  
200 Albert Street South, Lindsay ON K9V 5E6

[info@ktct.ca](mailto:info@ktct.ca)  
[ktct.ca](http://ktct.ca)

Brochure funding provided by  Ontario Trillium Foundation  Fondation Trillium de l'Ontario



  
Trans Canada Trail  
Sentier Transcanadien



## History

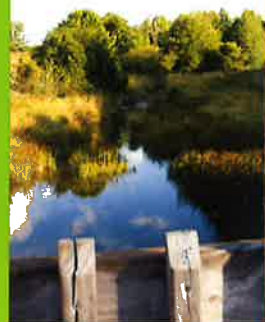
The corridor originated as a railway in 1858. After serving the region for more than a century the aging line was removed. The opportunity to be a vital link on the Trans Canada Trail led trail enthusiasts to commence building the Kawartha segment in 2000. It was completed during the summer of 2014.





### Mariposa Creek

This picturesque creek meanders through farmland and passes under the trail. It's located not far from the Pickseed Trail Shelter. A charming wood bridge crosses the creek offering wonderful views.



### Inukshuk

Two handcrafted inukshuks based on Inuit design are situated along the trail. This stone artwork sits at the Frost Campus entrance off Angeline Street South in Lindsay. Close by is the Fred DeNure Donor Wall.



### Ecosystem 2000

An inspiring project of students from Scott Young Public School, this living classroom is a testament to their enthusiasm for environmental science. It preserves a 20 hectare learning habitat that everyone can appreciate.



### Doube's Trestle Bridge

The trail travels on this awesome trestle bridge. It spans 200 metres over Buttermilk Valley and towers 29 metres above dense vegetation, streams, and woodland. Bring your camera.



This brochure made possible by these contributors

